

**CITY COUNCIL RESOLUTION NO: 2013-41**

**RESOLUTION OF THE CITY OF LARAMIE CITY COUNCIL APPROVING A REQUEST TO  
AMEND THE FUTURE LAND USE MAP (MAP 3.2) OF THE 2007 LARAMIE  
COMPREHENSIVE PLAN**

WHEREAS, the Laramie Planning Commission approved Planning Commission Resolution PC 2007-01, adopting the 2007 Laramie Comprehensive Plan in its entirety including the reservation of a subsequent chapter addressing conservation issues, replacing the 1995 Land Use Element and certifying the 2007 Laramie Comprehensive Plan to the City Council;

WHEREAS, on June 26, 2007, the City Council received the 2007 Laramie Comprehensive Plan as adopted and certified by the Planning Commission;

WHEREAS, on August 21, 2007 the Laramie City Council approved the 2007 Laramie Comprehensive Plan in its entirety for the physical development of the City of Laramie;

WHEREAS, on February 27, 2013, an application was received requesting an amendment to the Future Land Use Map (Map 3.2) of the 2007 Laramie Comprehensive Plan for a property approximately 6.3 acres in size and generally located northeast of the intersection of Vista Drive and Bobolink Lane, by changing the designation of the area described from the Estate category to the Auto-Urban Multifamily category as shown in Attachment 1;

WHEREAS, the 2007 Comprehensive Plan and applicable existing and anticipated future conditions contain rationale supporting the amendment of the property's Future Land Use designation shown in Attachment 1;

WHEREAS, pursuant to Wyoming Statutes § 15-1-505 adoption of a Planning Commission resolution amending the Comprehensive Plan shall be carried by the affirmative vote of not less than a majority of the commission;

WHEREAS, the City of Laramie Planning Commission acknowledged the aforesaid petition on April 22, 2013, took public comments, and after duly considering evidence presented as it applies to the adopted Comprehensive Plan, failed to vote by a majority of the commission to approve the land use designation of Auto-Urban Multifamily as shown in Attachment 1;

WHEREAS, on May 8, 2013 the petition was transmitted to Albany County Planning and Zoning Commission and Albany Board of County Commissioners, pursuant to Laramie Municipal Code 15.06.060.X and Wyoming Statutes § 15-1-505, for acknowledgement and concurrence;

WHEREAS, on May 21, 2013 the petition was to the Albany Board of County Commissioners, pursuant to Laramie Municipal Code 15.06.060.X and Wyoming Statutes § 15-1-505, for acknowledgement and concurrence;

WHEREAS, pursuant to Wyoming Statutes § 15-1-506 the City Council may overrule disapproval of adoption of a Planning Commission resolution amending the Comprehensive Plan by a vote of not less than a majority of its membership;

WHEREAS, the City Council acknowledged the aforesaid petition on May 21, 2013, took public comments, and after duly considering evidence presented as it applies to the adopted Comprehensive

Plan, voted to approve by a majority of its membership the land use designation of Auto-Urban Multifamily as shown in Attachment 1;

**THEREFORE THE LARAMIE CITY COUNCIL RESOLVES:**

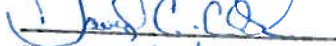
**Section 1.** That the Laramie City Council hereby approves Resolution 2013-\_\_\_, granting a request to amend the Future Land Use Map (Map 3.2) of the 2007 Laramie Comprehensive Plan, pursuant to Laramie Municipal Code 15.06.060.X and Wyoming Statutes § 15-1-503 and § 15-1-505, for a property approximately 6.3 acres in size and generally located northeast of the intersection of Vista Drive and Bobolink Lane, by changing the designation of the area described from the Estate category to the Auto-Urban Multifamily, as shown in Attachment 1.

**PASSED, APPROVED AND ADOPTED the 21<sup>st</sup> day of May, 2013.**



David A. Paulekas  
Mayor and President of the City Council

City Attorney's Office  
approval as to form:

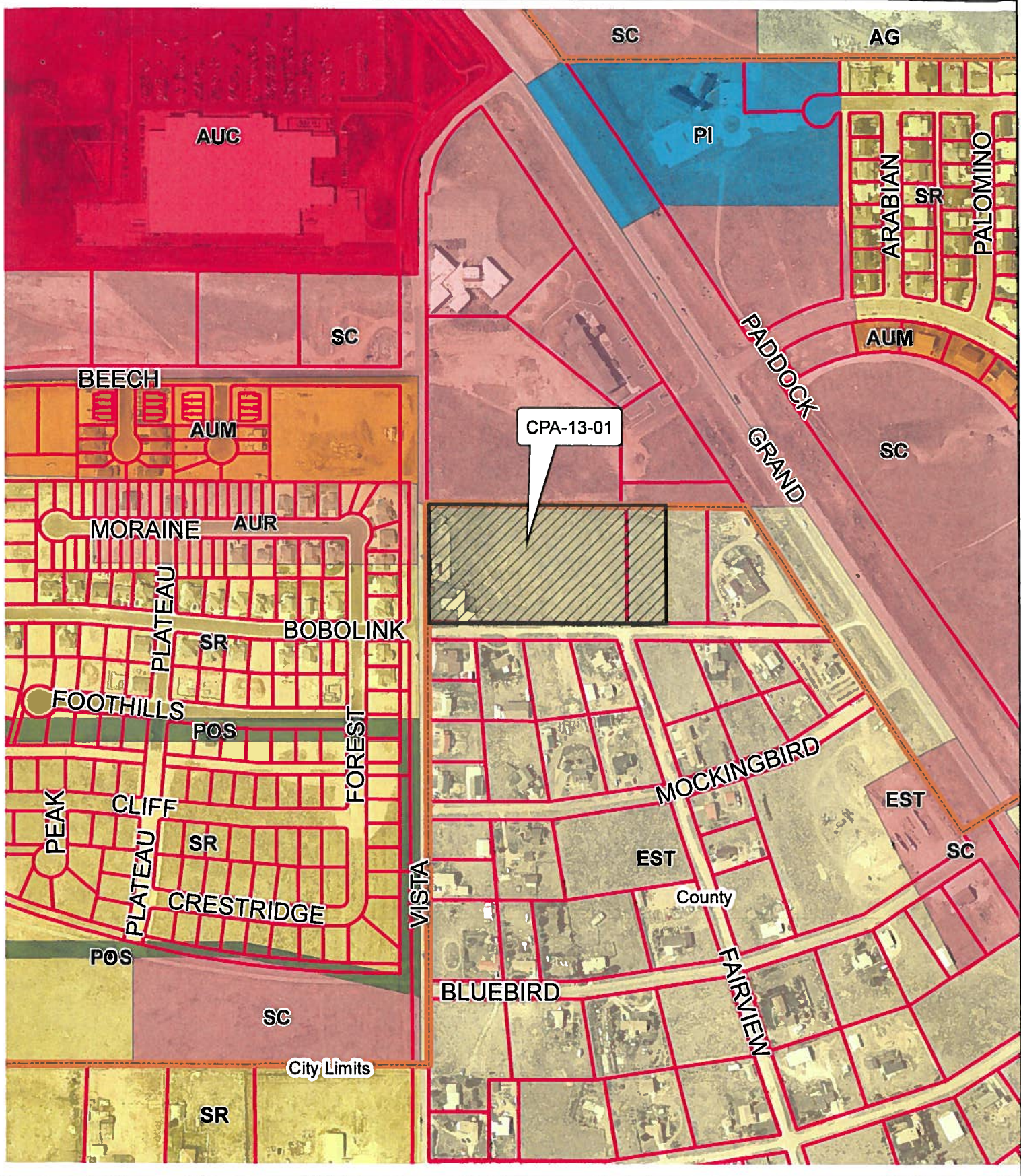
  
Date: 5/15/13

ATTEST:



Sue Morris-Jones, MMC  
City Clerk





**ATTACHMENT 1**

**Estate (EST) to  
Auto-Urban Multifamily  
(AUM)**



This Data contained herein was compiled from various sources for the sole use of the City of Laramie. REVIEW OF THIS DATA FOR ACCURACY AND ANY NECESSARY EDITING HAS NOT BEEN COMPLETED AT THIS TIME. Any use of the data by anyone other than the City of Laramie, and its members, is at the sole risk of the user, and by acceptance of this data, the user does hereby hold the City of Laramie, and its members, harmless and without liability from any claims, costs, or damages of any nature against the City of Laramie, including cost of defense arising from improper use of data, or use by other party. Acceptance or use of this data is done without any expressed or implied warranties.

