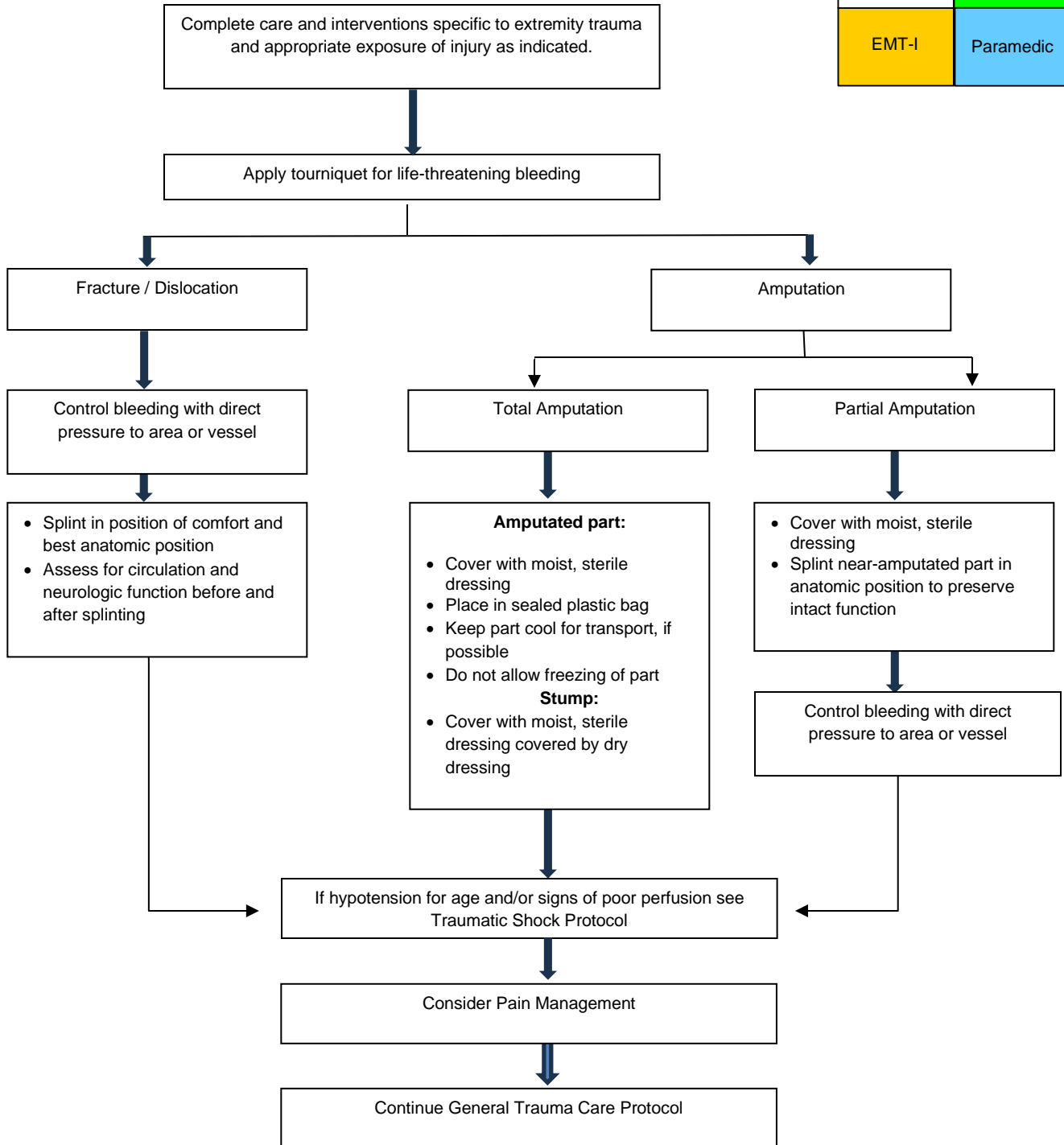


T020 EXTREMITY TRAUMA

EMT	AEMT
EMT-I	Paramedic



Fracture / Dislocation Considerations:

- Vascular compromise is an emergent concern; rapid transport to a trauma center is priority
- Consider potential for internal hemorrhage with any femur fracture
- Apply traction splint to suspected mid-shaft femur fracture when overall patient condition allows for procedure in field
- If open fracture, avoid allowing the bone ends to retract back into the wound during stabilization, splint in place

Amputation Considerations:

- Limb preservation and reattachment is an emergent concern; rapid transport to a trauma center is priority
- Perform and report neurologic findings for affected limb
- Maintain awareness for associated exposed fractured bone that could compromise hemorrhage control or cause provider injury
- **Consider 2nd tourniquet if bleeding not controlled with 1st**