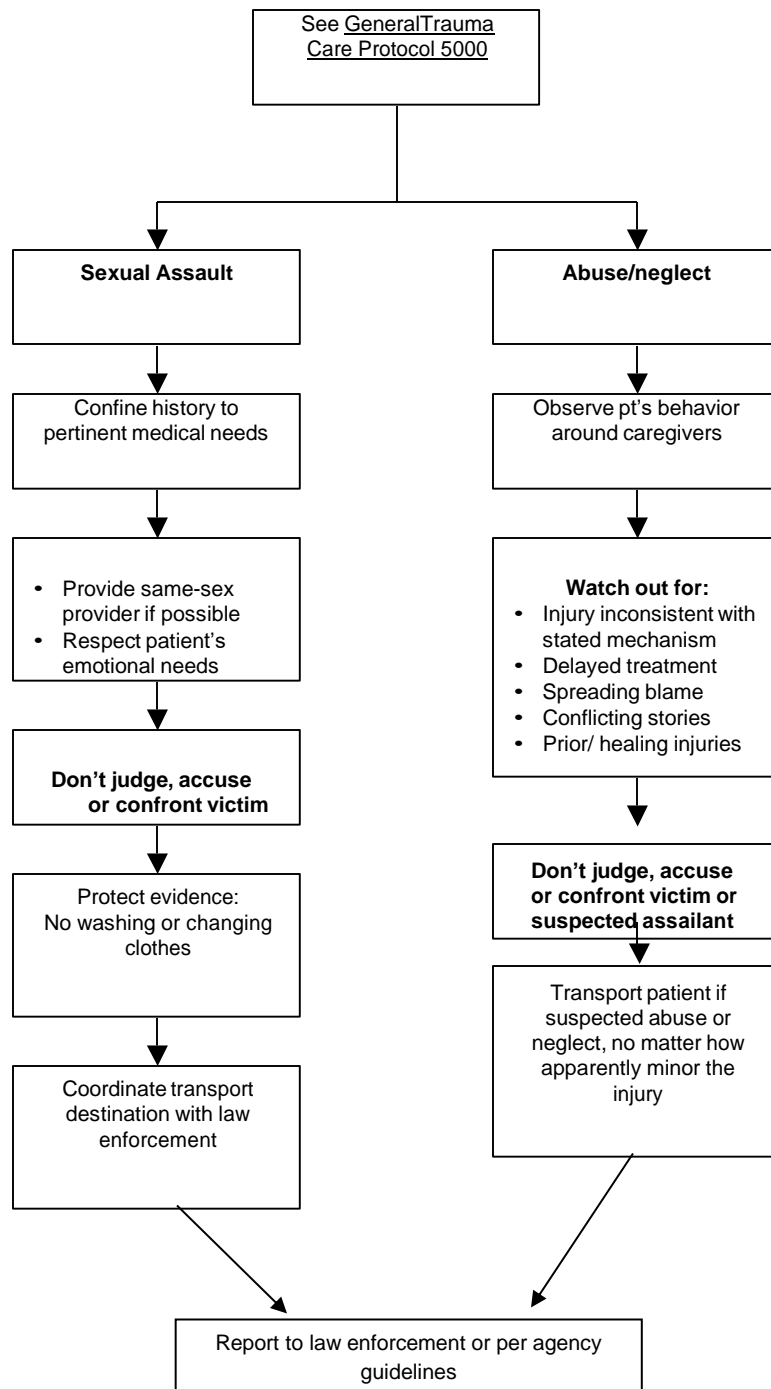


T005 SPECIAL TRAUMA SCENARIOS PROTOCOL

EMT	AEMT
EMT-I	Paramedic



Mandatory Reporters:

- EMS providers provide a critical layer of protection to vulnerable adults and children who have been abused.
- Wyoming law states “Any person who knows or has reasonable cause to suspect abuse or neglect ... shall cause a report to be made” 22LSO-0142