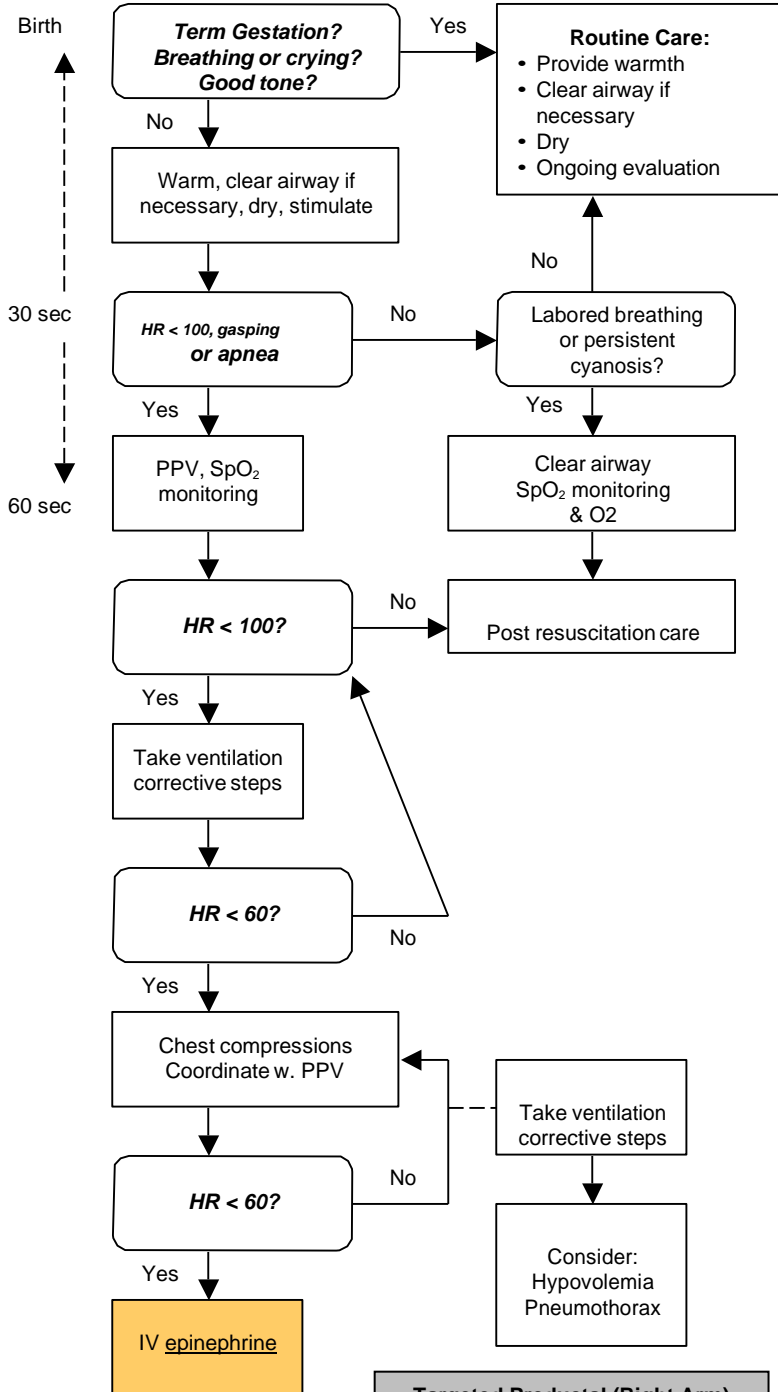


PO25 NEONATAL RESUSCITATION

EMT	AEMT
EMT-I	Paramedic



General Considerations
(From 2010 AHA Guidelines)

- Newborn infants who do not require resuscitation can be identified generally based on 3 questions:
 - Term gestation?
 - Crying or breathing?
 - Good muscle tone?
- If answer to all 3 questions is "yes" then baby does not require resuscitation and should be dried, placed skin-to-skin on mother and covered to keep warm
- If answer to any of 3 questions is "no" then infant should receive 1 or more of following 4 categories of intervention in sequence:
 - Initial steps in stabilization (warm, clear airway, dry, stimulate)
 - Ventilation
 - Chest compression
 - Administration of epinephrine and/or volume expansion
- It should take approx. 60 seconds to complete initial steps
- The decision to progress beyond initial steps is based on an assessment of respirations (apnea, gasping, labored or unlabored breathing) and heart rate (>/< 100 bpm)

Assisting Ventilations:

- Assist ventilations at rate of 40-60 breaths per minute to maintain HR > 100

Chest compressions:

- Indicated for HR < 60 despite adequate ventilation w. supplemental O₂ for 30 seconds
- 2 thumb – encircling hands technique preferred
- Allow chest recoil
- Coordinate with ventilations so not delivered simultaneously
- 3:1 ratio of compressions to ventilations w. exhalation occurring during 1st compression after each ventilation

Targeted Preductal (Right Arm) SpO₂ After Birth (From 2015 NRP Guidelines)

- 1 minute: 60%-65%
- 3 minutes: 60%-75%
- 5 minutes: 80%-85%
- 10 minutes: 85%-95%

Neonatal Oxygen Recommendations (From 2015 NRP Guidelines)

- Begin resuscitation of newborns ≥ 35 weeks gestation with room air. If breathing is labored, supplement with oxygen to the targets listed
- Begin resuscitation of newborns

Medications

- Epinephrine is indicated if the newborn's heart rate remains less than 60 beats/min after at least 30 seconds of PPV AND another 60 seconds of chest compressions coordinated with PPV using 100% oxygen