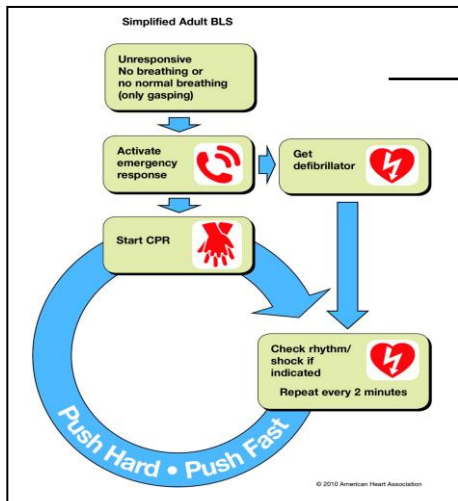
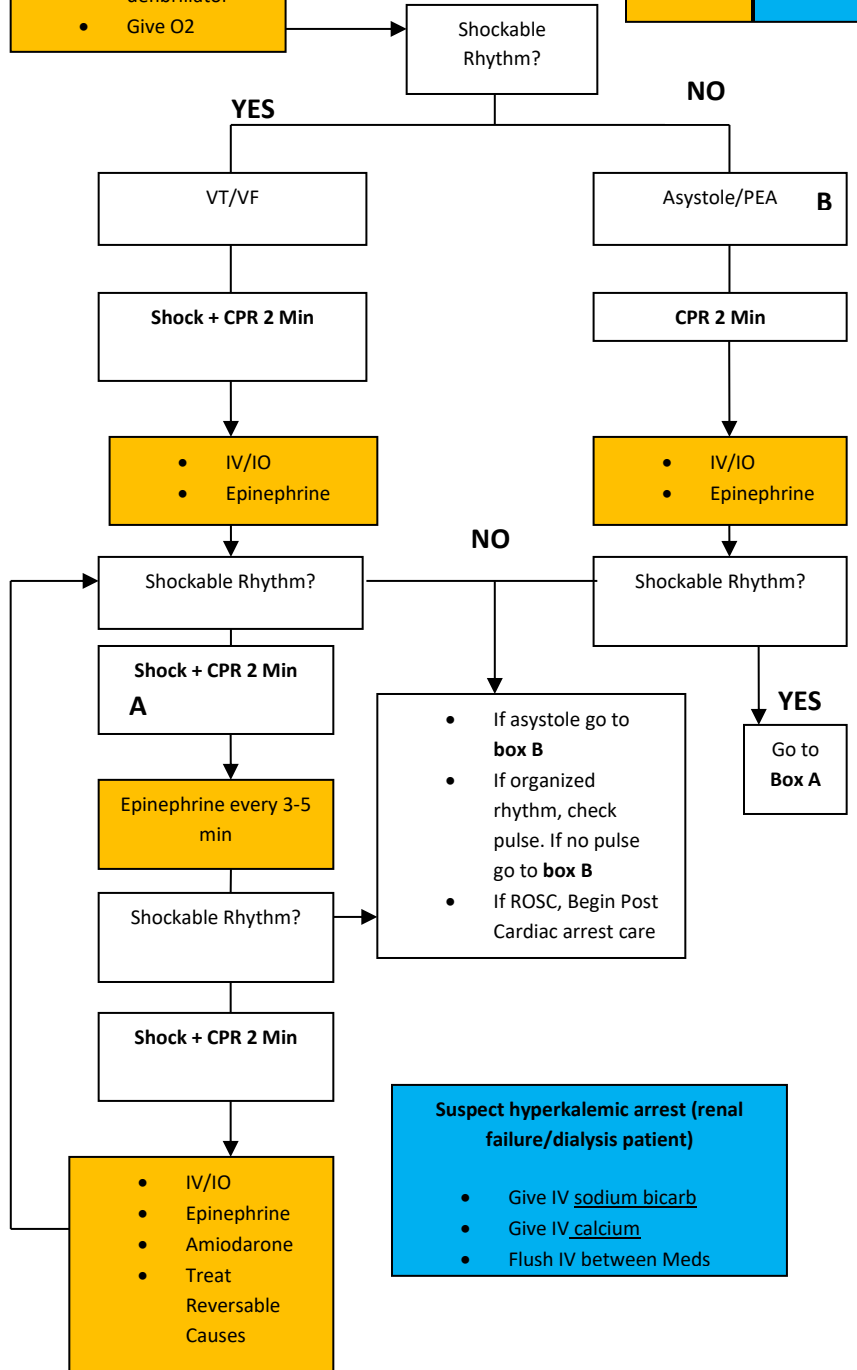


# C020 ADULT (≥12 YEARS) UNIVERSAL PULSELESS ARREST ALGORITHM

EMT	AEMT
EMT-I	EMT-P



- ### ALS Sequence
- Start CPR
  - Attach manual defibrillator
  - Give O2



- Refer to ACR Core Beliefs

- ### Reversible Causes
- Hypovolemia
  - Hypoxia
  - Hydrogen ion (acidosis)
  - Hypo/Hyperkalemia
  - Hypothermia
  - Tension Pneumothorax
  - Tamponade, Cardiac
  - Toxins
  - Thrombosis (Pulmonary, Coronary)

- ### Defibrillation:
- EMT + AEMT use AED
- Intermediate and Paramedic use Manual Defibrillator
- Anterior/Posterior pad placement preferred

- ### LUCAS Device
- During operation, patients may show signs of consciousness such as eye or arm movement with absent vital signs.
  - Consider administering benzodiazepines if patient appears agitated even with absent vital signs
  - Minimize all interruptions in chest compressions. Defibrillate with device running..

- ### Suspect hyperkalemic arrest (renal failure/dialysis patient)
- Give IV sodium bicarb
  - Give IV calcium
  - Flush IV between Meds