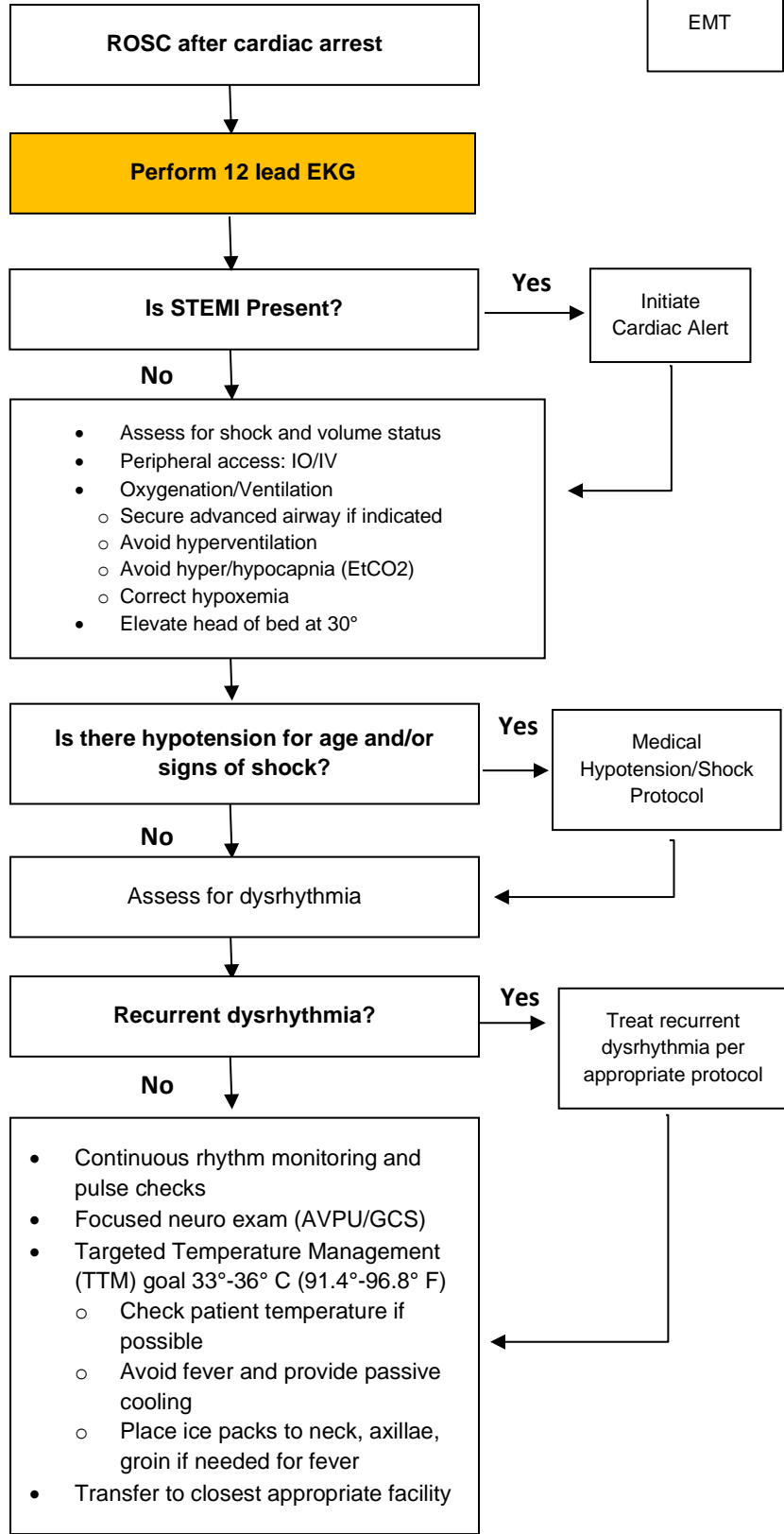


C010 PROCEDURE PROTOCOL: POST-RESUSCITATION CARE WITH ROSC

EMT	AEMT	EMT-I	Paramedic
-----	------	-------	-----------



Post-Cardiac Care

- Following ROSC, several simultaneous and stepwise interventions must be performed to optimize care and maximize patient outcome
- Survival and neurologic outcome worsen with fever, hypoxia, hypo/hypercapnia, and hypotension. Post-ROSC care should focus on prevention of these elements.

Return of Spontaneous Circulation (ROSC) criteria:

- Pulse and measurable BP
- Increase in ETCO2 on capnography

Document

- Time of arrest (or time last seen normal)
- Witnessed vs. unwitnessed arrest
- Initial rhythm shockable vs. non-shockable
- Bystander CPR given
- Time of ROSC
- GCS after ROSC
- Initial temperature of patient

Target ROSC Vital Signs

- **SPO2 92-98%**
- **PaCO2 35-35 mmHg**
- **Systolic BP > 90 mmHg or MAP > 65 mmHg**