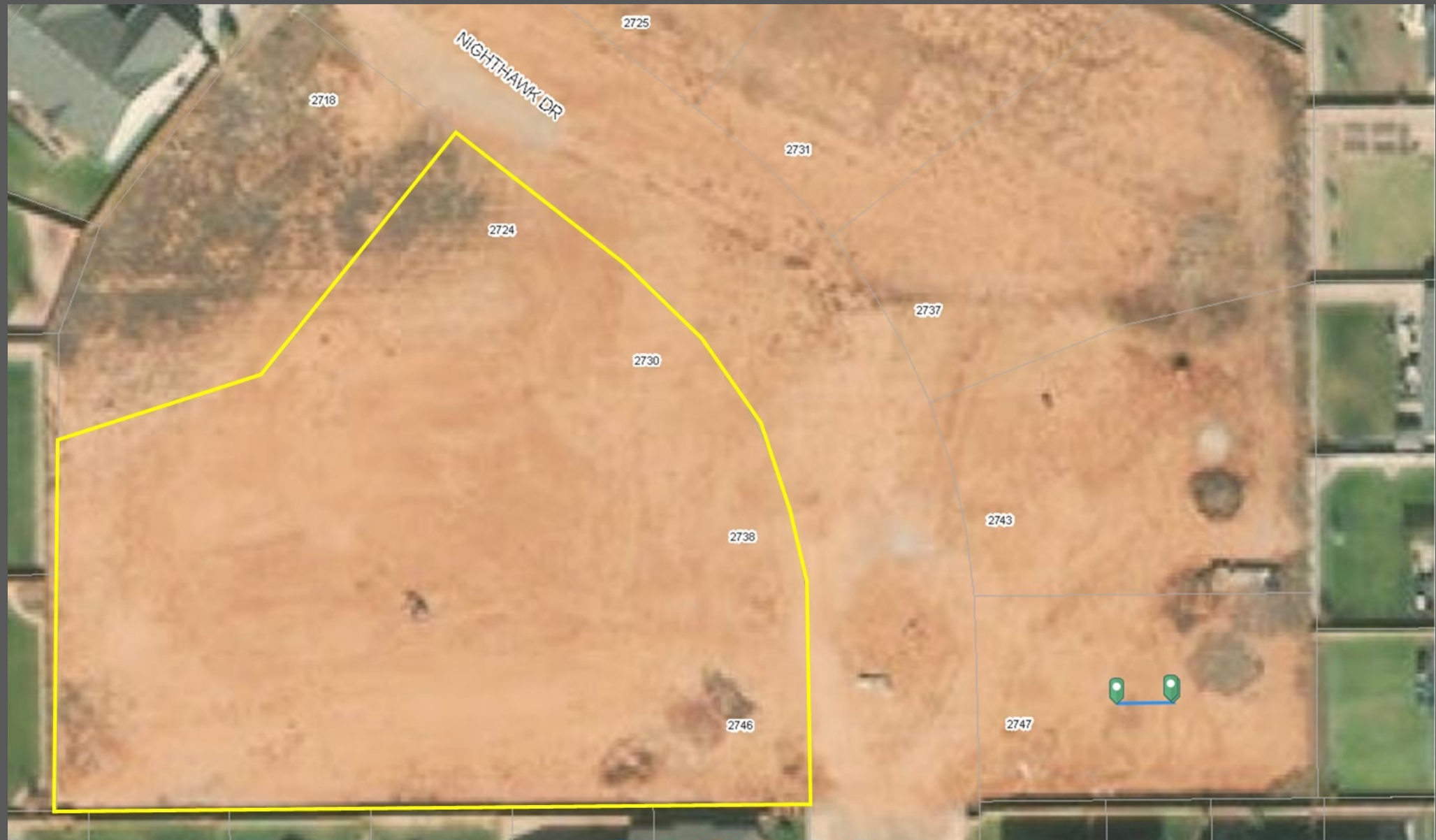




Coughlin Pole Mountain Park

Location: On Nighthawk Drive
between 28th Street, Reynolds
Street, Knadler Street and Bath
Avenue.



Things to Consider:

Nighthawk Drive has been installed and connects to Knadler Street.

Houses have been constructed on the north side of Nighthawk Drive and one lot remains to be built on the northwest corner of the park location.

Parking will be limited to street side parking.

This is a small park in the "playlot" category as it is just a little over 1 acre in size.



5-12-year-old Playground Samples

2-5-year-old Playground Samples



Half Basketball Court Samples





Park Bench Samples



Park Shelter Samples



Workout
Station
Samples



Landscape / Horticulture Samples

Crab Apple



Cottonwood




White Fir



White Ash





If you have any question, concerns, or
comments please reach out to:
Todd Feezer, Assistant City Manager
tfeezer@cityoflaramie.org