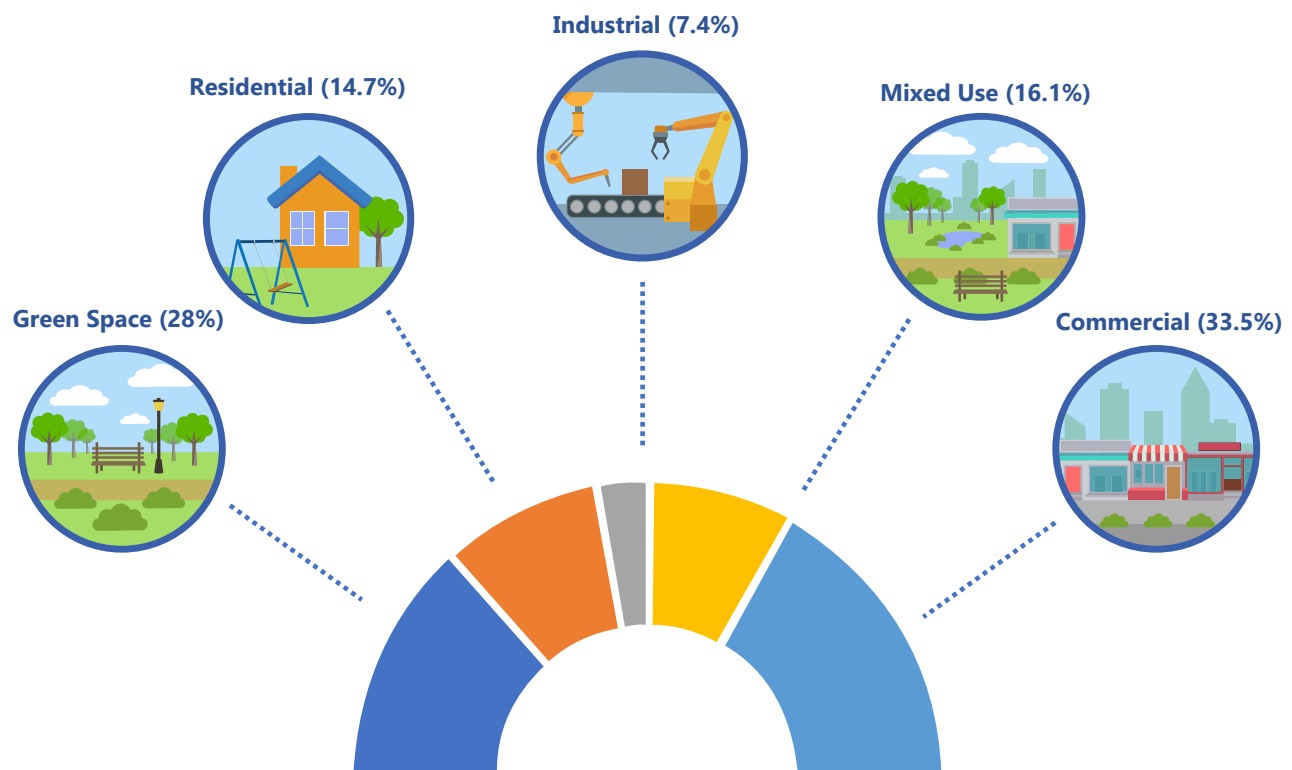


Reuse Possibilities for Brownfield Sites

Nearby residents and other local community members benefit when a brownfield site is transformed from an eyesore and safety concern into a new job center, recreational facility, housing or other community amenity. Safely reusing a brownfield site is possible when a redevelopment plan helps guide site assessment and cleanup decisions. Often, the process of assessing and cleaning up a single brownfield site sparks community interest to identify other sites for redevelopment!

Successful brownfield site redevelopment across the country can be described through five main categories.



Most commonly reported reuses for brownfield sites funded by U.S. EPA Cleanup and Revolving Loan Fund Grants.¹

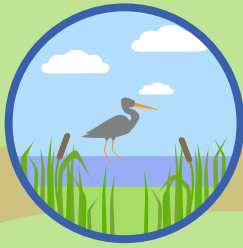
Various public, private and community organizations redevelop brownfields to meet the many different needs that exist within a community.

- Reuse supported by a public or community organization may focus on a site with limited commercial potential or is a priority for the neighborhood.
- A private investor is likely more interested in a site and reuse that will provide a strong return on investment.

Often, the goals of each party can be met through creativity and flexibility.

- For example, a brownfield site can be reused as commercial office spaces to serve as both a corporate headquarters and low-cost meeting space for community groups.

What will brownfields redevelopment look like in your community?



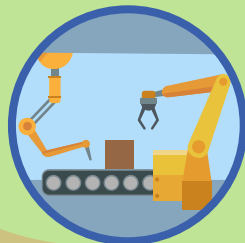
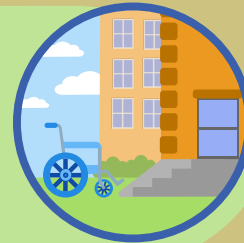
Green Space: Agriculture, community parks, trails, sports fields and facilities, open space and other recreational activities. These spaces also provide wildlife habitat and nature conservation opportunities.



Residential: Multi-family homes, like apartments and condos, single-family homes and other residential purposes, such as university and senior housing.



Industrial: Manufacturing buildings, warehouse, storage and distribution facilities, renewable energy production, research and development parks.



Mixed Use: Combination of two or more reuses (for example, an apartment building with retail and office spaces on the ground floor next to a public park).



Commercial: Offices, retail, restaurants, and other businesses; municipal buildings and non-profit centers.



Your voice and neighborhood knowledge can help create better brownfield reuse decisions. Get involved in the process!

¹ EPA grant recipients are required to report planned reuse through EPA's Assessment, Cleanup and Redevelopment Exchange System (ACRES). The percentages above are based on 6,350 grant recipient reported cleanups from 2006-2018. This data is publicly available at www.epa.gov/cleanups/cleanups-my-community