

# ConnectGEN

Rail Tie Wind Project



*Connecting Power,  
Projects, and People*

June 2020

[www.connectgenllc.com](http://www.connectgenllc.com)

# ConnectGen Company Overview

ConnectGen is an independent renewable energy developer with strong financial backing



Founded in 2018, ConnectGen is an independent renewable energy company focused on greenfield development of high quality wind, solar and energy storage projects across North America. Based in Houston, Texas, our experienced team has developed, built and operated thousands of megawatts across North America.

ConnectGen is backed by Quantum Energy Partners. Founded in 1998, Quantum Energy Partners is a leading provider of private equity capital to the global energy industry, having managed together with its affiliates more than \$16 billion in equity commitments since inception.

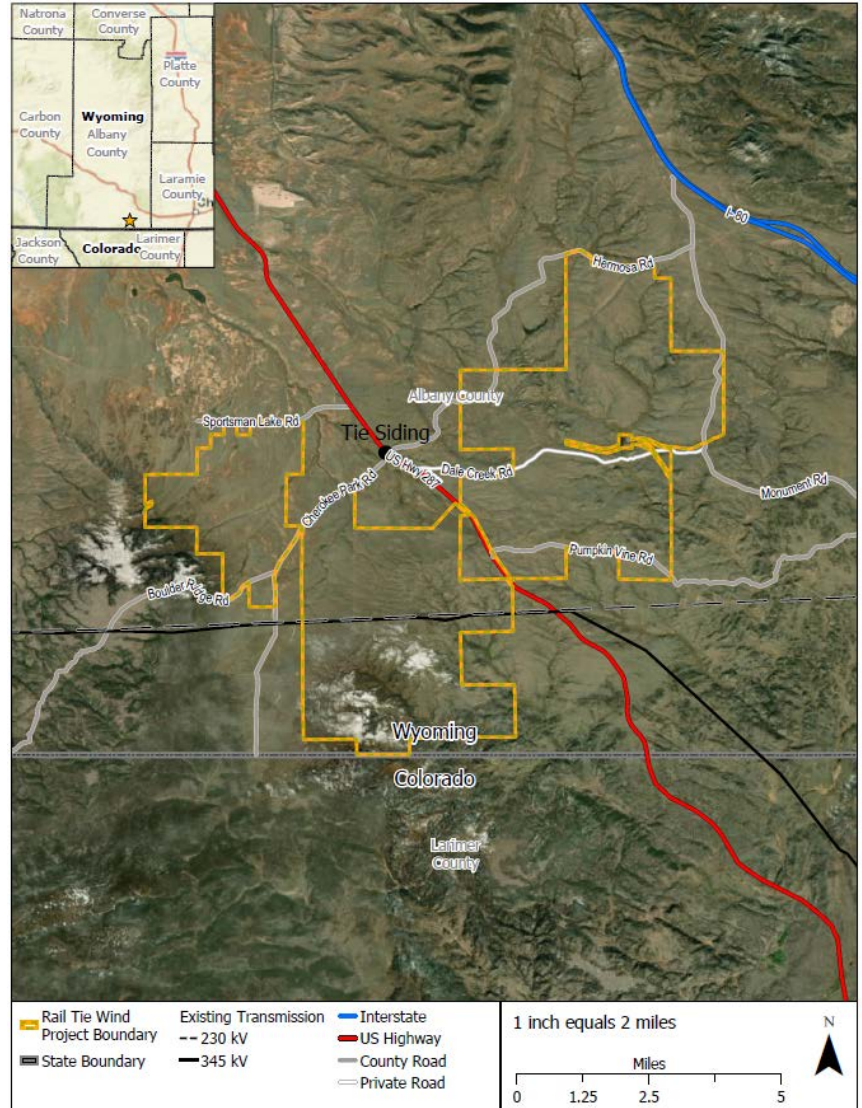


# Project Overview – Rail Tie Wind Project

<b>Location</b>	Albany County, WY (41°03'50.09"N, 105°28'45.55"W)
<b>Nearest City</b>	Laramie (approx. 15 mi)
<b>Commercial Operations Date</b>	December 2022
<b>Project area</b>	Approx. 26,000 acres (80% private, 20% state)
<b>Project size</b>	504 megawatts
<b>Point of Interconnection</b>	Tap on Ault – Craig 345 kV transmission line

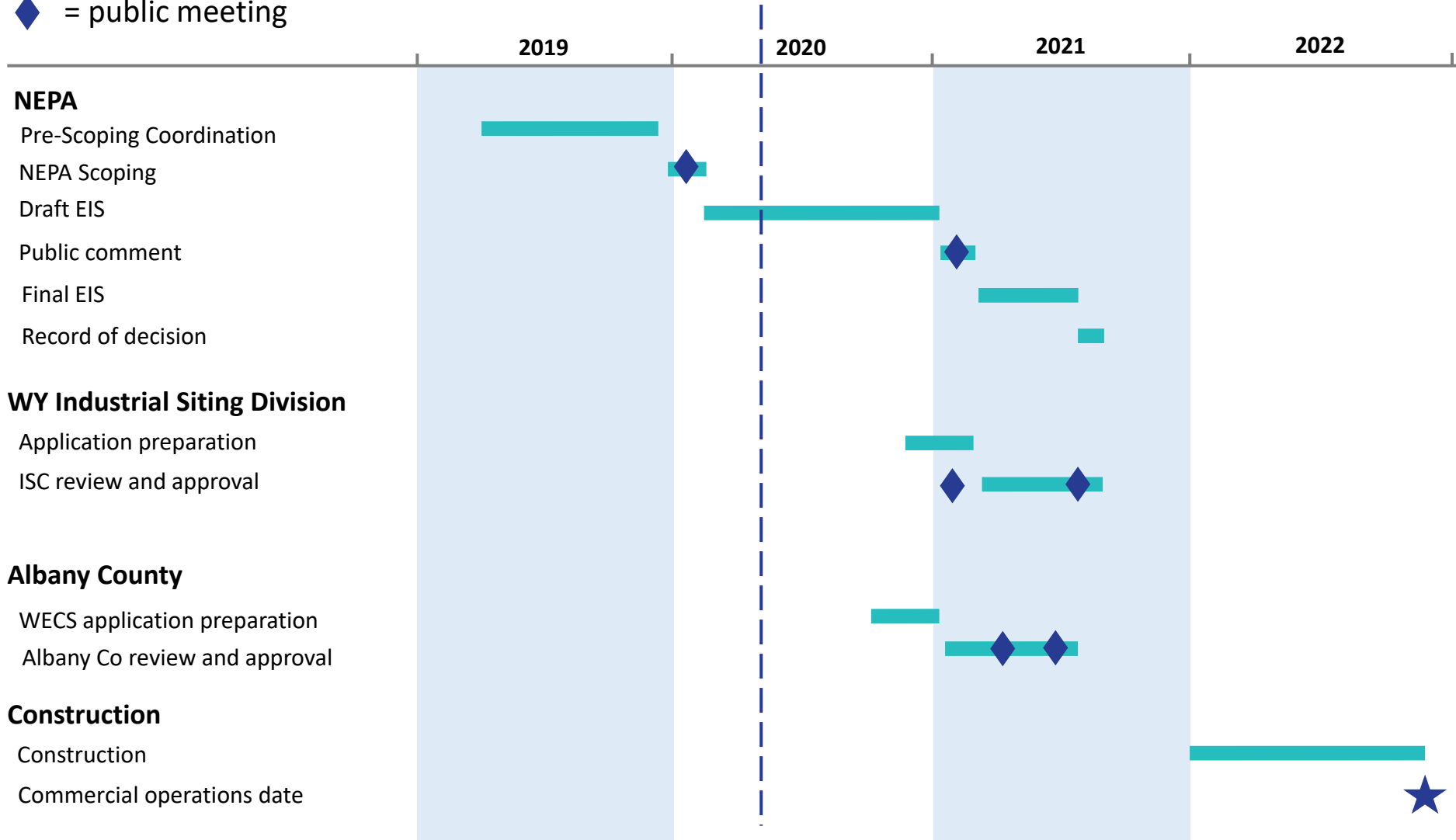
## Project Highlights

- Robust wind resource (10 m/s @ 100m hub height)
- Interconnection location does not require construction of gen-tie or significant upgrades
- Avoids highly sensitive environmental areas in WY
- Previous wind speed studies performed by Shell WindEnergy
- ConnectGen began updated studies in late 2018



# Rail Tie - Project Schedule

◆ = public meeting



# Project Benefits: Tax Revenues

## Rail Tie Wind Project Tax Revenues Paid to County and State:

	Sales & Use Tax (Construction, One-Time)	Sales & Use Tax (Operations, Avg Annual)	Excise Tax on Wind Generation (Annual)	Property Tax (Avg Annual)	Total Tax Revenues over 35 Year Project Life*
State of Wyoming	\$12.4 million	\$0.2 million	\$0.8 million	-	\$45.0 million
Albany County	\$14.6 million	\$0.3 million	\$1.2 million	\$1.9 million	\$133.5 million
<b>Total</b>	<b>\$27 million</b>	<b>\$0.5 million</b>	<b>\$2.0 million</b>	<b>\$1.9 million</b>	<b>\$178.5 million</b>

The **\$14.6 million** to be paid to Albany County during construction is equal to 80% of all sales & use taxes distributed to Albany County in 2018

Additionally, the Project will provide a steady stream of annual tax revenues to Albany County throughout its 35 year life, averaging **\$3.4 million** per year during operations.

# Project Benefits: Job Creation

The Rail Tie Wind Project will create new jobs and provide additional long term tax revenues

## Construction and Operations Jobs to be Filled by Wyoming workers:



### Construction

Direct Impacts: **113** construction jobs

Total Impacts: **644** jobs



### Operations

Direct Impacts: **23** permanent jobs

Total Impacts: **92** jobs

ConnectGen endeavors to use local labor, contractors and service providers when possible, and will be collecting info on qualified local businesses:

- Engineering
- Geotechnical
- Surveying
- Construction
- Concrete
- Aggregate / Stone
- Rebar providers
- Equipment rentals
- Trucking / Hauling
- Restoration
- Housing / Hospitality

# Visual Simulation – Tie Siding, looking southeast

Panoramic Existing Condition



Panoramic Simulated Condition



*Simulation depicts preliminary locations of maximum turbine height scenario*

# Visual Simulation – Ames Monument, looking southwest

Panoramic Existing Condition



Panoramic Simulated Condition



*Simulation depicts preliminary locations of maximum turbine height scenario*



# Rail Tie - Development Activities

## Land control

- Secured wind leases with 7 private landowners
- Application in process for 5,000 acres state land

## Outreach

- Agency Coordination
- County, State and Federal Officials

## Environmental Studies

- Baseline wildlife surveys began Jan 2019
- 2020 surveys for Wyoming SGCN
- Technical reports to support EIS preparation

## Interconnection

- WAPA Feasibility Study and System Impact Studies complete

## Wind analysis

- Met tower data acquired from previous developer
- Remote-sensing units installed



# Contact info

---

## ConnectGen contact information:

### **Amanda MacDonald**

Project Development Manager

Email: [amacdonald@connectgenllc.com](mailto:amacdonald@connectgenllc.com)

Phone: 508.246.6269

### **Deby Forry**

Outreach Manager

Email: [dforry@connectgenllc.com](mailto:dforry@connectgenllc.com)

Phone: 307.760.1849

**Rail Tie Wind Project website:** <https://www.railtiwind.com/>

## **WAPA EIS website:**

<https://www.wapa.gov/transmission/EnvironmentalReviewNEPA/Pages/rail-tie-wind-project.aspx>



Connect**GEN**

[www.connectgenllc.com](http://www.connectgenllc.com)