

KAD INVESTMENTS, LLC, A WY LLC ATTN: WALSH, JERRY

Attachment B

MAPPED SHERMAN HILLS FAULT

GRAND VISTA LAND PARTNERSHIP, LLP

GRAND VISTA LAND PARTNERSHIP, LLP

PIERANTONI, JUSTIN JAMES; DAPHNE KEATHER

GRIFFITHS, TELENE P; SHAWN C

CEDILLO, PHILIP; MARITES

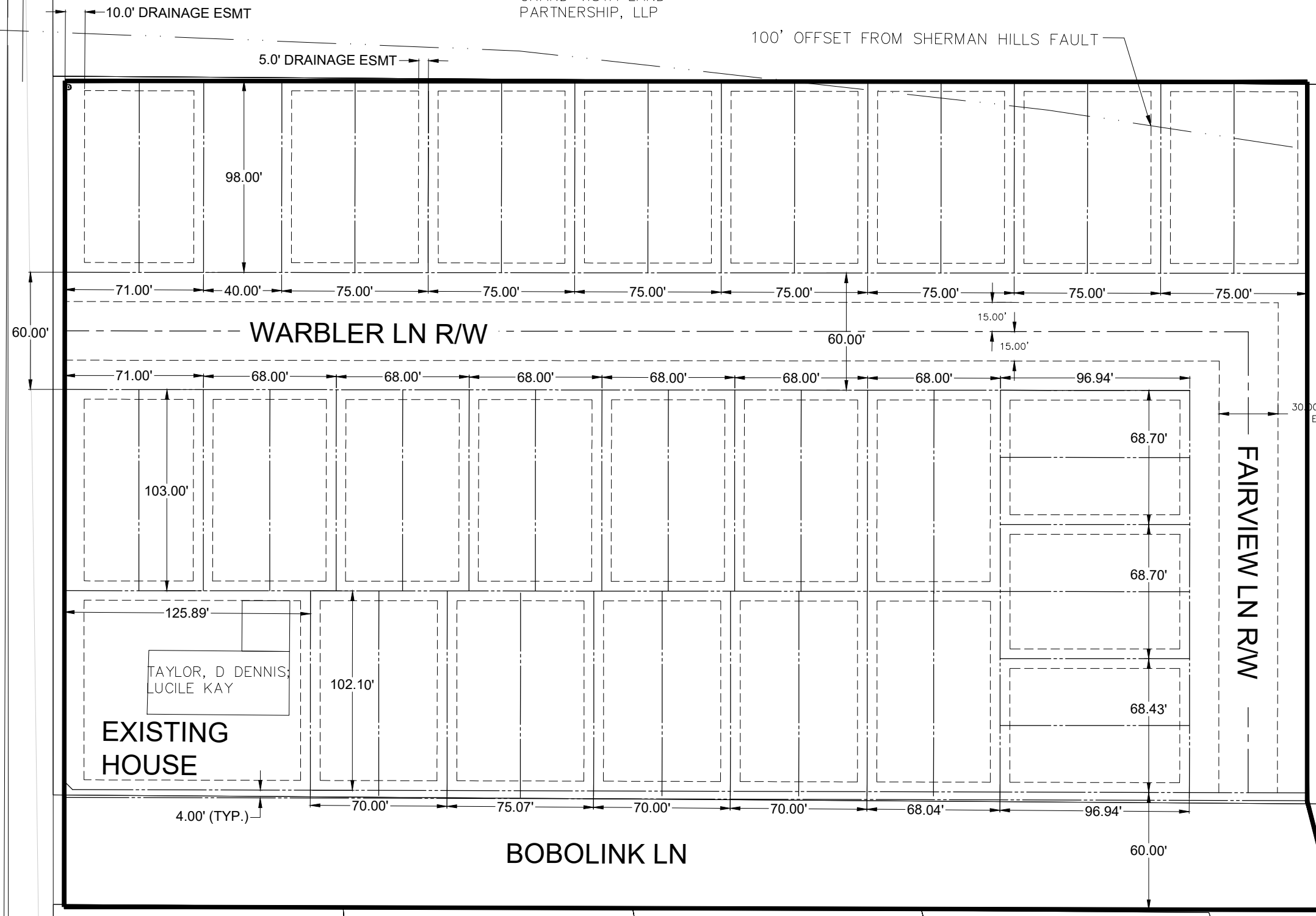
AHRABI, BEHZAD REZA; RASHIDIPOUR, ELAHEH

EWELL, DEREK A; LAURA M

BENNETT, MARIA A

VISTA DRIVE  
CITY OF LARAMIE A WYOMING MUNICIPAL CORP

CITY OF LARAMIE A WYOMING MUNICIPAL CORP



REV	DATE	DESCRIPTION	BY

**DOWL**  
 WWW.DOWL.COM  
 1575 N. 4th Street, #105  
 Laramie, Wyoming 82072  
 307-742-3816

Z HOMES AND PROPERTIES  
 PROPOSED DEVELOPMENT, LITTLE VALLEY SUBDIVISION  
**PROPOSED LOT LAYOUT**  
**LOT DIMENSIONS**  
 ALBANY CO WYOMING

PROJECT 5122.26961.01  
 DATE AUGUST 2019

© DOWL 2019  
 SHEET