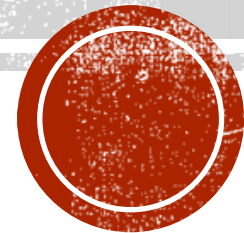


WORK SESSION: WARD BOUNDARIES

City Manager Janine Jordan, City Attorney Bob Southard,
City Clerk Nancy Bartholomew, City GIS Analyst Shawn
Kraft

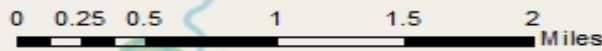
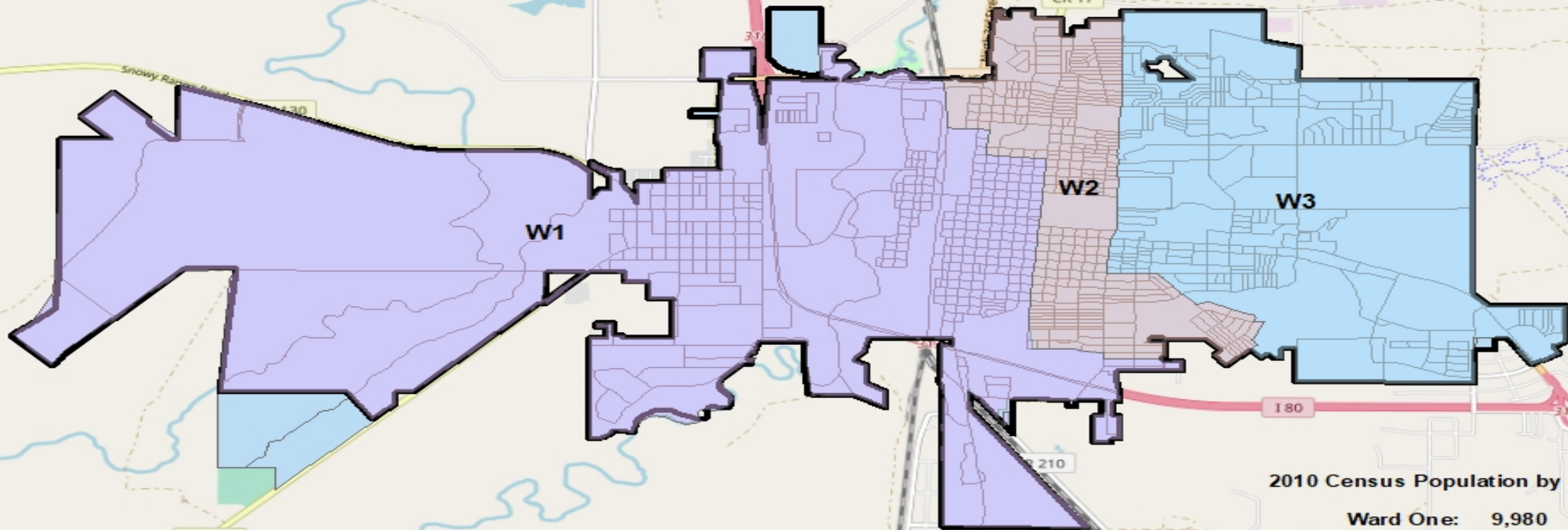


CITY COUNCIL

- ADOPT AN ORDINANCE THAT DIVIDES THE CITY INTO NEARLY EQUAL PORTIONS WITHIN 5%
- ORDINANCE MUST BE ADOPTED IN A TIMELY MANNER TO MEET WYOMING STATE STATUTE REQUIREMENTS AND ALLOW TIME TO FILE WITH THE COUNTY CLERK



Current Ward Boundaries 2021



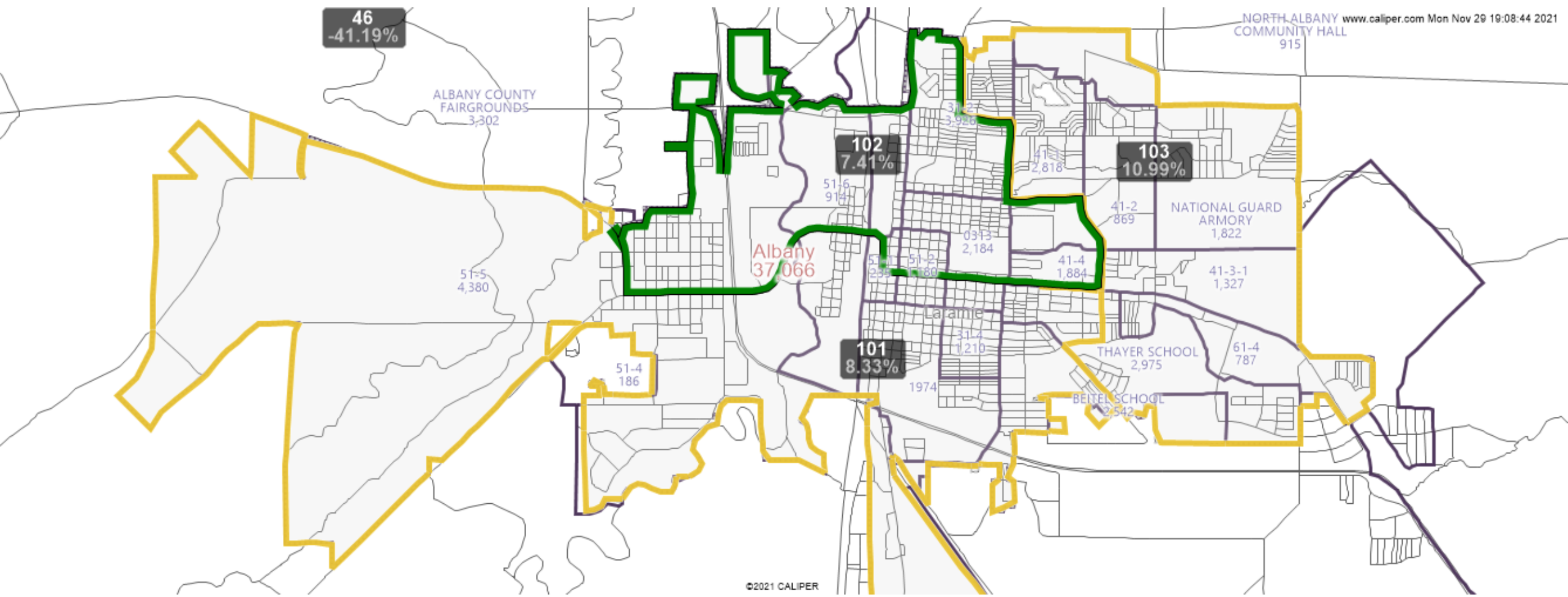
2010 Census Population by Ward

Ward One:	9,980
Ward Two:	10,330
Ward Three:	10,186

2020 Census Population by Ward

Ward One:	9,469
Ward Two:	9,633
Ward Three:	12,015

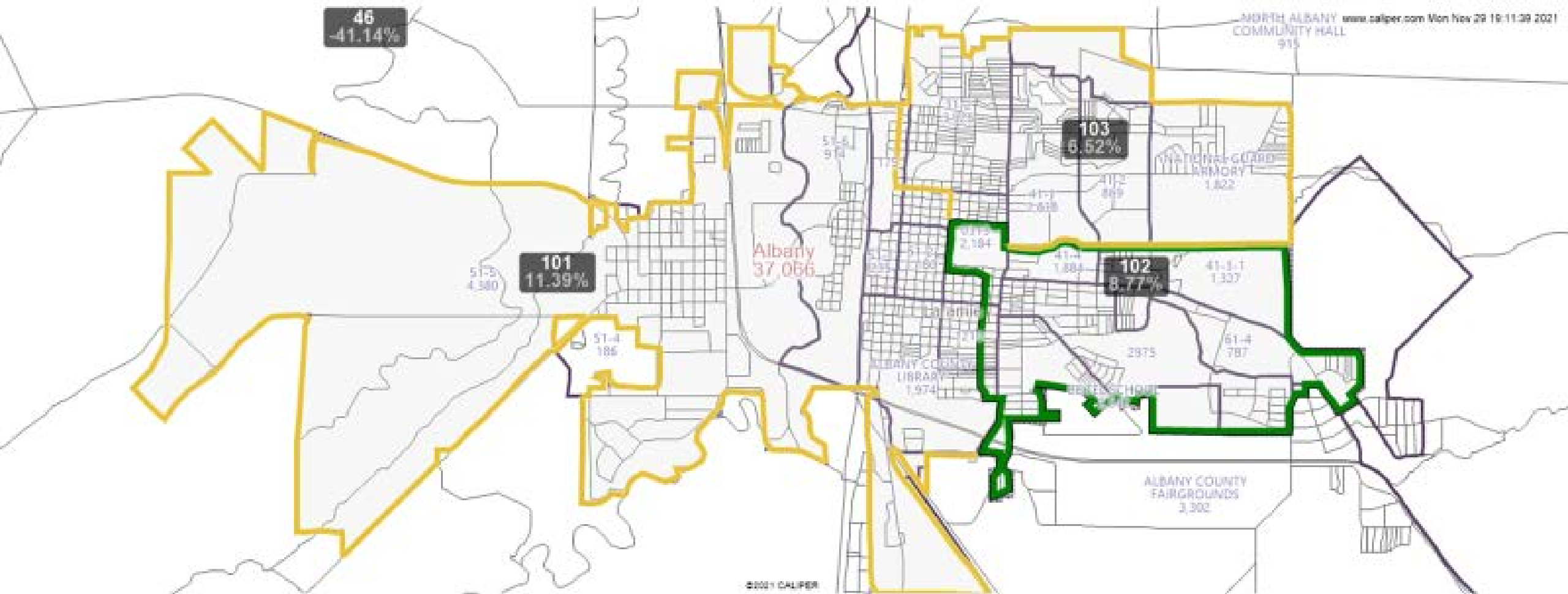
Proposal #1



101 (or 1 depending on map viewer) has 10,415
102 (or 2 depending on map viewer) has 10,326
103 (or 3 depending on map viewer) has 10,671



Proposal #2



101 (or 1 depending on map viewer) has 10,714
102 (or 2 depending on map viewer) has 10,457
103 (or 3 depending on map viewer) has 10,241



Proposal #2.1

